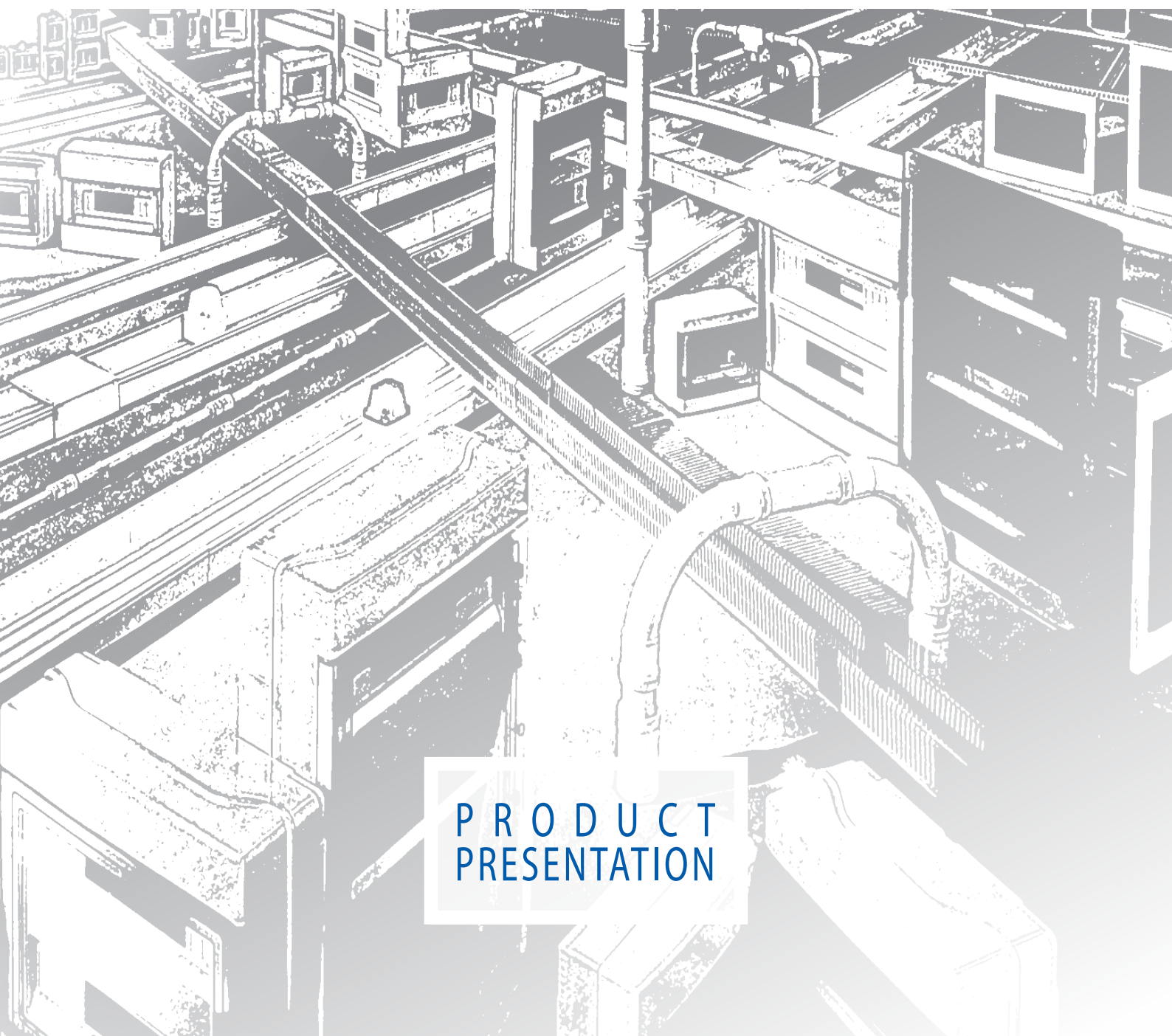




THE ITALIAN EVOLUTION OF ELECTRICITY

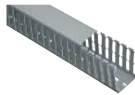


PRODUCT
PRESENTATION

SLOTTED TRUNKINGS

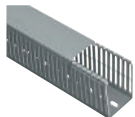
| Item | Colour | UM | Description | Pack-aging |
|------|--------|----|-------------|------------|
|------|--------|----|-------------|------------|

SLOTTED TRUNKING WITH COVER 8/12/8 TYPE A



| | | | | |
|------------|---|----|----------------------------|-----|
| EC A2525 | G | MT | dim. 25x25 | 100 |
| EC A2540 | G | MT | dim. 25x40 | 100 |
| EC A2560 | G | MT | dim. 25x60 | 70 |
| EC A2580 | G | MT | dim. 25x80 | 56 |
| EC A4025 | G | MT | dim. 40x25 | 80 |
| EC A4040 | G | MT | dim. 40x40 | 70 |
| EC A4060 | G | MT | dim. 40x60 | 56 |
| EC A4080 | G | MT | dim. 40x80 | 40 |
| EC A40100 | G | MT | dim. 40x100 | 32 |
| EC A6040 | G | MT | dim. 60x40 | 50 |
| EC A6060 | G | MT | dim. 60x60 | 32 |
| EC A6080 | G | MT | dim. 60x80 | 36 |
| EC A60100 | G | MT | dim. 60x100 | 24 |
| EC A8040 | G | MT | dim. 80x40- ready 2 sep. | 40 |
| EC A8060 | G | MT | dim. 80x60- ready 2 sep. | 28 |
| EC A8080 | G | MT | dim. 80x80- ready 2 sep. | 30 |
| EC A80100 | G | MT | dim. 80x100- ready 2 sep. | 24 |
| EC A10040 | G | MT | dim. 100x40- ready 2 sep. | 28 |
| EC A10060 | G | MT | dim. 100x60- ready 2 sep. | 20 |
| EC A10080 | G | MT | dim. 100x80- ready 2 sep. | 24 |
| EC A100100 | G | MT | dim. 100x100- ready 2 sep. | 16 |
| EC A12040 | G | MT | dim. 120x40- ready 2 sep. | 24 |
| EC A12060 | G | MT | dim. 120x60- ready 2 sep. | 20 |
| EC A12080 | G | MT | dim. 120x80- ready 2 sep. | 16 |

SLOTTED TRUNKING WITH COVER 4/6/4 TYPE S



| | | | | |
|------------|---|----|-----------------------------|-----|
| EC S2525 | G | MT | dim. 25x25 | 100 |
| EC S2540 | G | MT | dim. 25x40 | 100 |
| EC S2560 | G | MT | dim. 25x60 | 70 |
| EC S2580 | G | MT | dim. 25x80 | 56 |
| EC S4025 | G | MT | dim. 40x25 | 80 |
| EC S4040 | G | MT | dim. 40x40 | 70 |
| EC S4060 | G | MT | dim. 40x60 | 56 |
| EC S4080 | G | MT | dim. 40x80 | 40 |
| EC S40100 | G | MT | dim. 40x100 | 32 |
| EC S6040 | G | MT | dim. 60x40 | 50 |
| EC S6060 | G | MT | dim. 60x60 | 32 |
| EC S6080 | G | MT | dim. 60x80 | 36 |
| EC S60100 | G | MT | dim. 60x100 | 24 |
| EC S8040 | G | MT | dim. 80x40 - ready 2 sep. | 40 |
| EC S8060 | G | MT | dim. 80x60 - ready 2 sep. | 28 |
| EC S8080 | G | MT | dim. 80x80 - ready 2 sep. | 30 |
| EC S80100 | G | MT | dim. 80x100 - ready 2 sep. | 24 |
| EC S10040 | G | MT | dim. 100x40 - ready 2 sep. | 28 |
| EC S10060 | G | MT | dim. 100x60 - ready 2 sep. | 20 |
| EC S10080 | G | MT | dim. 100x80 - ready 2 sep. | 24 |
| EC S100100 | G | MT | dim. 100x100 - ready 2 sep. | 16 |
| EC S12040 | G | MT | dim. 120x40 - ready 2 sep. | 24 |
| EC S12060 | G | MT | dim. 120x60 - ready 2 sep. | 20 |
| EC S12080 | G | MT | dim. 120x80 - ready 2 sep. | 16 |

SECTIONABLE SEPARATOR FOR SLOTTED TRUNKINGS A/S TYPE



| | | | | |
|---------|---|----|----------------|----|
| EC SESG | G | MT | For H 40-60-80 | 50 |
|---------|---|----|----------------|----|

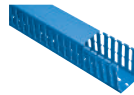
SPARE COVER FOR SLOTTED TRUNKINGS A/S TYPE



| | | | | |
|-----------|---|----|-------------|-----|
| EC CR25G | G | MT | dim. 25 mm | 100 |
| EC CR40G | G | MT | dim. 40 mm | 100 |
| EC CR60G | G | MT | dim. 60 mm | 100 |
| EC CR80G | G | MT | dim. 80 mm | 100 |
| EC CR100G | G | MT | dim. 100 mm | 60 |
| EC CR120G | G | MT | dim. 120 mm | 80 |

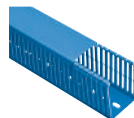
| Item | Colour | UM | Description | Pack-aging |
|------|--------|----|-------------|------------|
|------|--------|----|-------------|------------|

SLOTTED TRUNKING WITH COVER 8/12/8 TYPE A - BLUE



| | | | | |
|--------------|----|----|--------------|-----|
| EC A2525BL | BL | MT | dim. 25x25 | 100 |
| EC A2540BL | BL | MT | dim. 25x40 | 100 |
| EC A2560BL | BL | MT | dim. 25x60 | 70 |
| EC A2580BL | BL | MT | dim. 25x80 | 56 |
| EC A4025BL | BL | MT | dim. 40x25 | 80 |
| EC A4040BL | BL | MT | dim. 40x40 | 70 |
| EC A4060BL | BL | MT | dim. 40x60 | 56 |
| EC A4080BL | BL | MT | dim. 40x80 | 40 |
| EC A40100BL | BL | MT | dim. 40x100 | 32 |
| EC A6040BL | BL | MT | dim. 60x40 | 50 |
| EC A6060BL | BL | MT | dim. 60x60 | 32 |
| EC A6080BL | BL | MT | dim. 60x80 | 36 |
| EC A60100BL | BL | MT | dim. 60x100 | 24 |
| EC A8040BL | BL | MT | dim. 80x40 | 40 |
| EC A8060BL | BL | MT | dim. 80x60 | 28 |
| EC A8080BL | BL | MT | dim. 80x80 | 30 |
| EC A80100BL | BL | MT | dim. 80x100 | 24 |
| EC A10060BL | BL | MT | dim. 100x60 | 20 |
| EC A10080BL | BL | MT | dim. 100x80 | 24 |
| EC A100100BL | BL | MT | dim. 100x100 | 16 |

SLOTTED TRUNKING WITH COVER 4/6/4 TYPE S - BLUE



| | | | | |
|--------------|----|----|--------------|-----|
| EC S2525BL | BL | MT | dim. 25x25 | 100 |
| EC S2540BL | BL | MT | dim. 25x40 | 100 |
| EC S2560BL | BL | MT | dim. 25x60 | 70 |
| EC S2580BL | BL | MT | dim. 25x80 | 56 |
| EC S4025BL | BL | MT | dim. 40x25 | 80 |
| EC S4040BL | BL | MT | dim. 40x40 | 70 |
| EC S4060BL | BL | MT | dim. 40x60 | 56 |
| EC S4080BL | BL | MT | dim. 40x80 | 40 |
| EC S40100BL | BL | MT | dim. 40x100 | 32 |
| EC S6040BL | BL | MT | dim. 60x40 | 50 |
| EC S6060BL | BL | MT | dim. 60x60 | 32 |
| EC S6080BL | BL | MT | dim. 60x80 | 36 |
| EC S60100BL | BL | MT | dim. 60x100 | 24 |
| EC S8040BL | BL | MT | dim. 80x40 | 40 |
| EC S8060BL | BL | MT | dim. 80x60 | 28 |
| EC S8080BL | BL | MT | dim. 80x80 | 30 |
| EC S80100BL | BL | MT | dim. 80x100 | 24 |
| EC S10060BL | BL | MT | dim. 100x60 | 20 |
| EC S10080BL | BL | MT | dim. 100x80 | 24 |
| EC S100100BL | BL | MT | dim. 100x100 | 16 |

SPARE COVER FOR BLUE SLOTTED TRUNKINGS



| | | | | |
|------------|----|----|-------------|-----|
| EC CR25BL | BL | MT | dim. 25 mm | 100 |
| EC CR40BL | BL | MT | dim. 40 mm | 100 |
| EC CR60BL | BL | MT | dim. 60 mm | 100 |
| EC CR80BL | BL | MT | dim. 80 mm | 100 |
| EC CR100BL | BL | MT | dim. 100 mm | 60 |

SLOTTED TRUNKINGS

| Item | Colour | UM | Description | Pack-aging |
|------|--------|----|-------------|------------|
|------|--------|----|-------------|------------|

HALOGEN FREE SLOTTED TRUNKING WITH COVER 8/12/8 TYPE



HALOGEN Free

| | | | | |
|------------|----|----|-------------|-----|
| EC AH2540 | GC | MT | dim. 25x40 | 100 |
| EC AH2560 | GC | MT | dim. 25x60 | 70 |
| EC AH2580 | GC | MT | dim. 25x80 | 56 |
| EC AH4040 | GC | MT | dim. 40x40 | 70 |
| EC AH4060 | GC | MT | dim. 40x60 | 56 |
| EC AH4080 | GC | MT | dim. 40x80 | 40 |
| EC AH6040 | GC | MT | dim. 60x40 | 50 |
| EC AH6060 | GC | MT | dim. 60x60 | 32 |
| EC AH6080 | GC | MT | dim. 60x80 | 36 |
| EC AH8040 | GC | MT | dim. 80x40 | 40 |
| EC AH8060 | GC | MT | dim. 80x60 | 28 |
| EC AH8080 | GC | MT | dim. 80x80 | 30 |
| EC AH10040 | GC | MT | dim. 100x40 | 28 |
| EC AH10060 | GC | MT | dim. 100x60 | 20 |
| EC AH10080 | GC | MT | dim. 100x80 | 24 |
| EC AH12040 | GC | MT | dim. 120x40 | 24 |
| EC AH12060 | GC | MT | dim. 120x60 | 20 |
| EC AH12080 | GC | MT | dim. 120x80 | 16 |

HALOGEN FREE SLOTTED TRUNKING WITH COVER 4/6/4 TYPE



HALOGEN Free

| | | | | |
|------------|----|----|-------------|-----|
| EC SH2540 | GC | MT | dim. 25x40 | 100 |
| EC SH2560 | GC | MT | dim. 25x60 | 70 |
| EC SH2580 | GC | MT | dim. 25x80 | 56 |
| EC SH4040 | GC | MT | dim. 40x40 | 70 |
| EC SH4060 | GC | MT | dim. 40x60 | 56 |
| EC SH4080 | GC | MT | dim. 40x80 | 40 |
| EC SH6040 | GC | MT | dim. 60x40 | 50 |
| EC SH6060 | GC | MT | dim. 60x60 | 32 |
| EC SH6080 | GC | MT | dim. 60x80 | 36 |
| EC SH8040 | GC | MT | dim. 80x40 | 40 |
| EC SH8060 | GC | MT | dim. 80x60 | 28 |
| EC SH8080 | GC | MT | dim. 80x80 | 30 |
| EC SH10040 | GC | MT | dim. 100x40 | 28 |
| EC SH10060 | GC | MT | dim. 100x60 | 20 |
| EC SH10080 | GC | MT | dim. 100x80 | 24 |
| EC SH12040 | GC | MT | dim. 120x40 | 24 |
| EC SH12060 | GC | MT | dim. 120x60 | 20 |
| EC SH12080 | GC | MT | dim. 120x80 | 16 |

SPARE COVER FOR HALOGEN FREE SLOTTED TRUNKINGS



HALOGEN Free

| | | | | |
|------------|----|----|----------|-----|
| EC CR25HG | GC | MT | dim. 25 | 100 |
| EC CR40HG | GC | MT | dim. 40 | 100 |
| EC CR60HG | GC | MT | dim. 60 | 100 |
| EC CR80HG | GC | MT | dim. 80 | 100 |
| EC CR100HG | GC | MT | dim. 100 | 60 |
| EC CR120HG | GC | MT | dim. 120 | 80 |

CABLE RETAINER

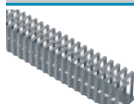


HALOGEN Free

| | | | | |
|-------------|----|-----|--------------|------|
| EC C04040 | GC | PCS | dim. 40x40 | 5/25 |
| EC C04060 | GC | PCS | dim. 40x60 | 5/25 |
| EC C04080 | GC | PCS | dim. 40x80 | 5/25 |
| EC C040100 | GC | PCS | dim. 40x100 | 5/25 |
| EC C06040 | GC | PCS | dim. 60x40 | 5/25 |
| EC C06060 | GC | PCS | dim. 60x60 | 5/25 |
| EC C06080 | GC | PCS | dim. 60x80 | 5/25 |
| EC C060100 | GC | PCS | dim. 60x100 | 5/25 |
| EC C08040 | GC | PCS | dim. 80x40 | 5/25 |
| EC C08060 | GC | PCS | dim. 80x60 | 5/25 |
| EC C08080 | GC | PCS | dim. 80x80 | 5/25 |
| EC C080100 | GC | PCS | dim. 80x100 | 5/25 |
| EC C010040 | GC | PCS | dim. 100x40 | 5/25 |
| EC C010060 | GC | PCS | dim. 100x60 | 5/25 |
| EC C010080 | GC | PCS | dim. 100x80 | 5/25 |
| EC C0100100 | GC | PCS | dim. 100x100 | 5/25 |
| EC C012040 | GC | PCS | dim. 120x40 | 5/25 |
| EC C012060 | GC | PCS | dim. 120x60 | 5/25 |
| EC C012080 | GC | PCS | dim. 120x80 | 5/25 |

| Item | Colour | UM | Description | Pack-aging |
|------|--------|----|-------------|------------|
|------|--------|----|-------------|------------|

FLEXIBLE SLOTTED TRUNKINGS



| | | | | |
|----------|---|-----|---------------------------------|-----|
| EC 23401 | G | PCS | 12,5x12,5x500 | 112 |
| EC 23402 | G | PCS | 16x16x500 | 84 |
| EC 23403 | G | PCS | 20x20x500 | 112 |
| EC 23404 | G | PCS | 25x25x500 | 70 |
| EC 23405 | G | PCS | 30x30x500 | 50 |
| EC 23406 | G | PCS | 40x40x500 | 50 |
| EC 23407 | G | PCS | 50x50x500 | 32 |
| EC 23411 | G | PCS | 12,5x12,5x500 - adhesive fixing | 112 |
| EC 23412 | G | PCS | 16x16x500 - adhesive fixing | 84 |
| EC 23413 | G | PCS | 20x20x500 - adhesive fixing | 112 |
| EC 23414 | G | PCS | 25x25x500 - adhesive fixing | 70 |
| EC 23415 | G | PCS | 30x30x500 - adhesive fixing | 50 |
| EC 23416 | G | PCS | 40x40x500 - adhesive fixing | 50 |
| EC 23417 | G | PCS | 50x50x500 - adhesive fixing | 32 |

TRANSPARENT SPIRAL WRAP



| | | | | |
|---------|--|--------|----------------|--------|
| EC P1.5 | | x100MT | internal Ø 1,5 | 25/500 |
| EC P03 | | x100MT | internal Ø 3 | 25/500 |
| EC P04 | | x100MT | internal Ø 4 | 25/500 |
| EC P06 | | x100MT | internal Ø 6 | 25/300 |
| EC P08 | | x100MT | internal Ø 8 | 25/200 |
| EC P10 | | x100MT | internal Ø 10 | 25/150 |
| EC P12 | | x100MT | internal Ø 12 | 20/120 |
| EC P14 | | x100MT | internal Ø 14 | 20/100 |

BLACK SPIRAL WRAP



| | | | | |
|----------|--|--------|----------------|--------|
| EC PN1.5 | | x100MT | internal Ø 1,5 | 25/500 |
| EC PN03 | | x100MT | internal Ø 3 | 25/500 |
| EC PN04 | | x100MT | internal Ø 4 | 25/500 |
| EC PN06 | | x100MT | internal Ø 6 | 25/300 |
| EC PN08 | | x100MT | internal Ø 8 | 25/200 |
| EC PN10 | | x100MT | internal Ø 10 | 25/150 |
| EC PN12 | | x100MT | internal Ø 12 | 20/120 |
| EC PN14 | | x100MT | internal Ø 14 | 20/100 |

SELF-EXTINGUISHING SPIRAL WRAP



| | | | | |
|----------|--|--------|----------------|--------|
| EC PA1.5 | | x100MT | internal Ø 1,5 | 25/500 |
| EC PA03 | | x100MT | internal Ø 3 | 25/500 |
| EC PA04 | | x100MT | internal Ø 4 | 25/500 |
| EC PA06 | | x100MT | internal Ø 6 | 25/300 |
| EC PA08 | | x100MT | internal Ø 8 | 25/200 |
| EC PA10 | | x100MT | internal Ø 10 | 25/150 |
| EC PA12 | | x100MT | internal Ø 12 | 20/120 |
| EC PA14 | | x100MT | internal Ø 14 | 20/100 |

EN 50022 DIN RAILS



| | | | | |
|----------|--|-----|----------------------------|----|
| EC 460 | | PCS | 35x7,5x1 - 2 mt | 20 |
| EC 46015 | | PCS | 35x15x1,5 - 2 mt | 20 |
| EC 460F | | PCS | 35x7,5x1 - 2 mt perforated | 20 |

CUTTING MACHINE FOR SLOTTED TRUNKINGS



| | | | | |
|---------|--|-----|---------------------------------|---|
| EC ADC | | PCS | L=125, H=120 | 1 |
| EC LAMA | | PCS | Spare blade for cutting machine | 1 |

TECHNICAL DATA SHEET

MAIN CHARACTERISTICS

SLOTTED TRUNKINGS A / S SERIES

CONSTRUCTIVE TECHNICAL CHARACTERISTICS

Material: made of technopolymer on rigid PVC base, self-extinguishing V0 degree to UL94 and high resistance to UV rays.

Standard colours: grey RAL 7030, on request White RAL 9001 or Blue RAL 5012.

Shock resistance: IK07 (up to 2 J).

Resistance to heat in continuous use up to 70°C.

Resistance to abnormal heat: up to 960°C (Glow Wire Test according to IEC 60695-2-11 standard).

Application temperature: minimum -5°C, maximum +60°C.

Insulation resistance > 100 MΩ.

Dielectric voltage 4,5 Kv/mm.

Standard length: 2 mt bars.

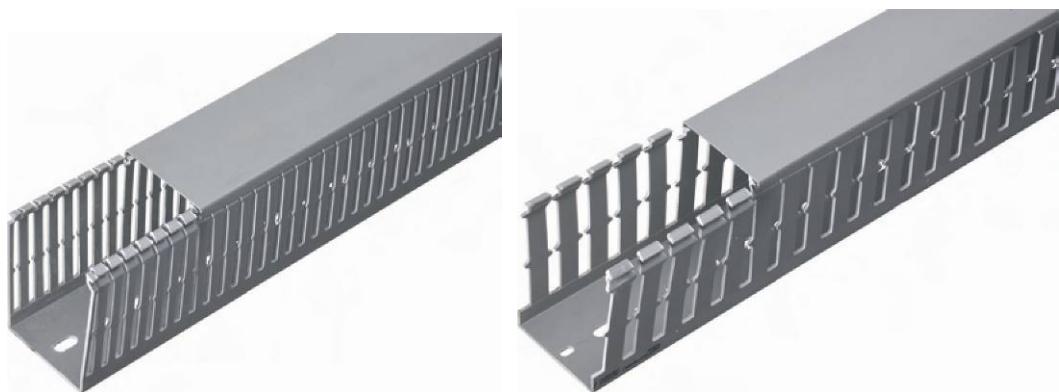
Made in compliance with EN 50085-1:2005 + A1:2013, EN 50085-2-3:2010, UL 1565 standards.

Approvals: IMQ, UL, RINA.

Products in compliance with RoHS II - 2011/65/EU directive + 2015/863/EU.

Products meeting the safety objectives of Low Voltage Directive 2014/35/EU (Annex I).

Made in Italy.



USABLE AREA OF THE SLOTTED TRUNKINGS SERIES A AND S

| ITEM | DESCRIPTION | SECTION mm ² | CABLE TYPE HO7-U/R/K mm ² | | |
|-----------------------|---|----------------------------|--------------------------------------|-----|-----|
| | | | 1 | 1,5 | 2,5 |
| ECA2525 - ECS2525 | Slotted trunking with cover dim. 25x25 mm | 480 | 46 | 34 | 24 |
| ECA2540 - ECS2540 | Slotted trunking with cover dim. 25x40 mm | 760 | 72 | 54 | 38 |
| ECA2560 - ECS2560 | Slotted trunking with cover dim. 25x60 mm | 1100 | 105 | 79 | 55 |
| ECA2580 - ECS2580 | Slotted trunking with cover dim. 25x80 mm | 1520 | 145 | 109 | 76 |
| ECA4025 - ECS4025 | Slotted trunking with cover dim. 40x25 mm | 752 | 72 | 54 | 38 |
| ECA4040 - ECS4040 | Slotted trunking with cover dim. 40x40 mm | 1214 | 116 | 87 | 61 |
| ECA4060 - ECS4060 | Slotted trunking with cover dim. 40x60 mm | 1950 | 186 | 139 | 98 |
| ECA4080 - ECS4080 | Slotted trunking with cover dim. 40x80 mm | 2530 | 241 | 181 | 127 |
| ECA40100 - ECS40100 | Slotted trunking with cover dim. 40x100 mm | 3110 | 296 | 222 | 156 |
| ECA6040 - ECS6040 | Slotted trunking with cover dim. 60x40 mm | 1930 | 184 | 138 | 97 |
| ECA6060 - ECS6060 | Slotted trunking with cover dim. 60x60 mm | 3046 | 290 | 218 | 152 |
| ECA6080 - ECS6080 | Slotted trunking with cover dim. 60x80 mm | 4215 | 401 | 301 | 211 |
| ECA60100 - ECS60100 | Slotted trunking with cover dim. 60x100 mm | 5332 | 508 | 381 | 267 |
| ECA8040 - ECS8040 | Slotted trunking with cover dim. 80x40 mm | 2530 | 241 | 181 | 127 |
| ECA8060 - ECS8060 | Slotted trunking with cover dim. 80x60 mm | 4202 | 400 | 300 | 210 |
| ECA8080 - ECS8080 | Slotted trunking with cover dim. 80x80 mm | 5620 | 535 | 401 | 281 |
| ECA80100 - ECS80100 | Slotted trunking with cover dim. 80x100 mm | 7064 | 673 | 505 | 353 |
| ECA10040 - ECS10040 | Slotted trunking with cover dim. 100x40 mm | 3316 | 316 | 237 | 166 |
| ECA10060 - ECS10060 | Slotted trunking with cover dim. 100x60 mm | 5236 | 499 | 374 | 262 |
| ECA10080 - ECS10080 | Slotted trunking with cover dim. 100x80 mm | 7156 | 682 | 511 | 358 |
| ECA100100 - ECS100100 | Slotted trunking with cover dim. 100x100 mm | 8980 | 855 | 641 | 449 |
| ECA12040 - ECS12040 | Slotted trunking with cover dim. 120x40 mm | 4040 | 385 | 289 | 202 |
| ECA12060 - ECS12060 | Slotted trunking with cover dim. 120x60 mm | 6340 | 604 | 453 | 317 |
| ECA12080 - ECS12080 | Slotted trunking with cover dim. 120x80 mm | 8640 | 823 | 617 | 432 |

USABLE AREA OF THE SLOTTED TRUNKINGS SERIES SH

| ITEM | DESCRIPTION | SECTION mm ² | CABLE TYPE HO7-U/R/K mm ² | | |
|-----------|--|----------------------------|--------------------------------------|-----|-----|
| | | | 1 | 1,5 | 2,5 |
| ECSH2540 | Slotted trunking with cover dim. 25x40 mm | 760 | 72 | 54 | 38 |
| ECSH2560 | Slotted trunking with cover dim. 25x60 mm | 1100 | 105 | 79 | 55 |
| ECSH2580 | Slotted trunking with cover dim. 25x80 mm | 1520 | 145 | 109 | 76 |
| ECSH4040 | Slotted trunking with cover dim. 40x40 mm | 1214 | 116 | 87 | 61 |
| ECSH4060 | Slotted trunking with cover dim. 40x60 mm | 1950 | 186 | 139 | 98 |
| ECSH4080 | Slotted trunking with cover dim. 40x80 mm | 2530 | 241 | 181 | 127 |
| CSH6040 | Slotted trunking with cover dim. 60x40 mm | 1930 | 184 | 138 | 97 |
| ECSH6060 | Slotted trunking with cover dim. 60x60 mm | 3046 | 290 | 218 | 152 |
| ECSH6080 | Slotted trunking with cover dim. 60x80 mm | 4215 | 401 | 301 | 211 |
| ECSH8040 | Slotted trunking with cover dim. 80x40 mm | 2530 | 241 | 181 | 127 |
| ECSH8060 | Slotted trunking with cover dim. 80x60 mm | 4202 | 400 | 300 | 210 |
| ECSH8080 | Slotted trunking with cover dim. 80x80 mm | 5620 | 535 | 401 | 281 |
| ECSH10040 | Slotted trunking with cover dim. 100x40 mm | 3316 | 316 | 237 | 166 |
| ECSH10060 | Slotted trunking with cover dim. 100x60 mm | 5236 | 499 | 374 | 262 |
| ECSH10080 | Slotted trunking with cover dim. 100x80 mm | 7156 | 682 | 511 | 358 |
| ECSH12040 | Slotted trunking with cover dim. 120x40 mm | 4040 | 385 | 289 | 202 |
| ECSH12060 | Slotted trunking with cover dim. 120x60 mm | 6340 | 604 | 453 | 317 |
| ECSH12080 | Slotted trunking with cover dim. 120x80 mm | 8640 | 823 | 617 | 432 |